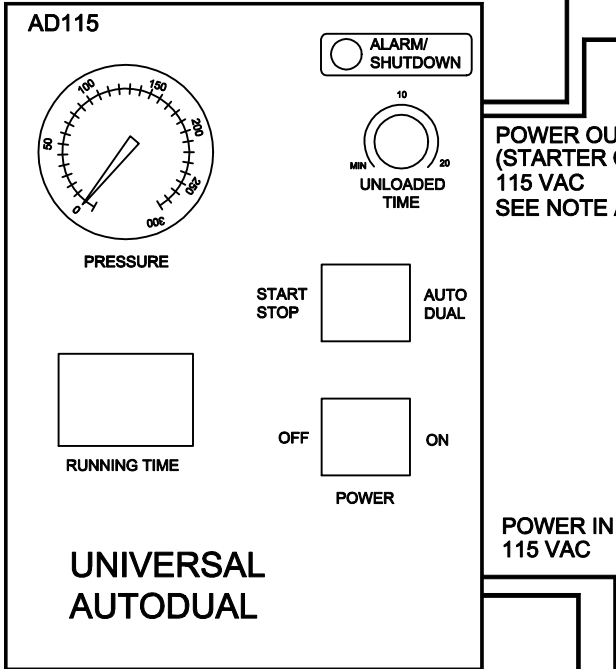


**IMPORTANT !!**  
**STARTER COIL MUST BE SPECIFIED AS**  
**115 VOLTS A.C.**  
**MISMATCH OF CONTROL VOLTAGE & COIL**  
**SETTINGS WILL DAMAGE EQUIPMENT**  
**AND VOID AUTODUAL AND STARTER WARRANTY**  
**SEE CONTROL VOLTAGE TRANSFORMER**  
**JUMPER SETTINGS BELOW**

FROM MAIN POWER  
DISCONNECT BOX

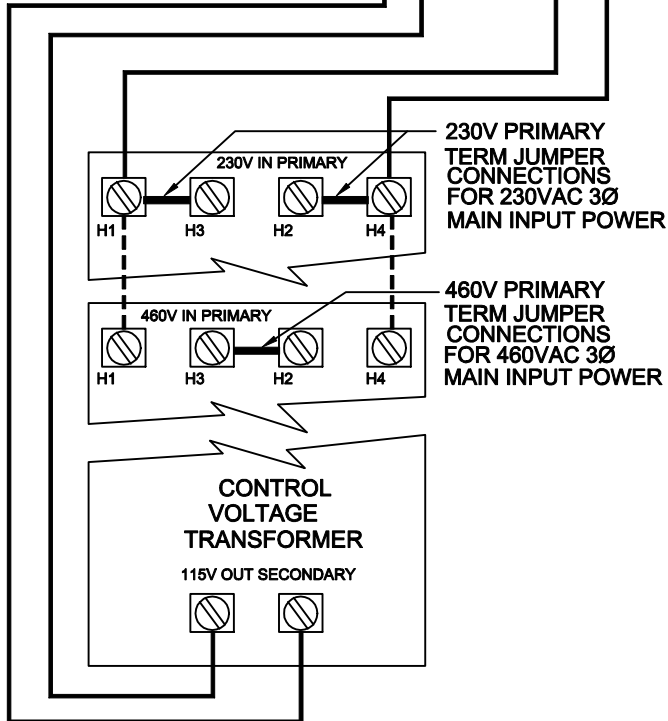
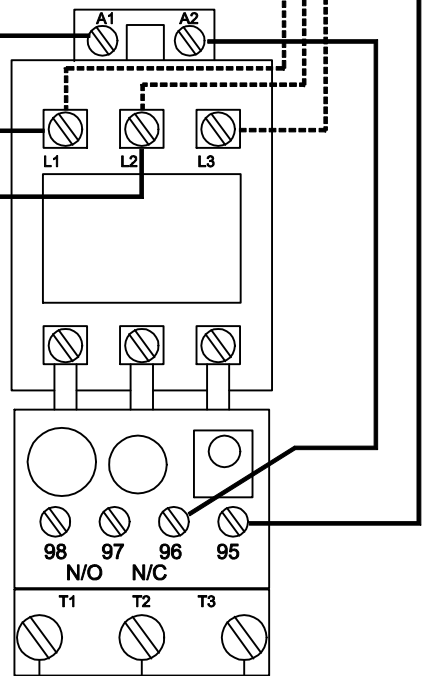
**MAIN POWER IN**  
**TO STARTER**  
**230/460VAC 3Ø**  
 SEE NOTE



POWER OUT  
(STARTER COIL)  
115 VAC  
SEE NOTE ABOVE

POWER IN  
115 VAC

COIL 115 VAC



230V PRIMARY  
TERM JUMPER  
CONNECTIONS  
FOR 230VAC 3Ø  
MAIN INPUT POWER

460V PRIMARY  
TERM JUMPER  
CONNECTIONS  
FOR 460VAC 3Ø  
MAIN INPUT POWER

**MOTOR**

1/60/230  
3/60/230

**AUTODUAL WIRING - 230/460VOLTS/3 PHASE**  
**W/ 115VAC STARTER COIL**  
**WITH CONTROL VOLTAGE TRANSFORMER**