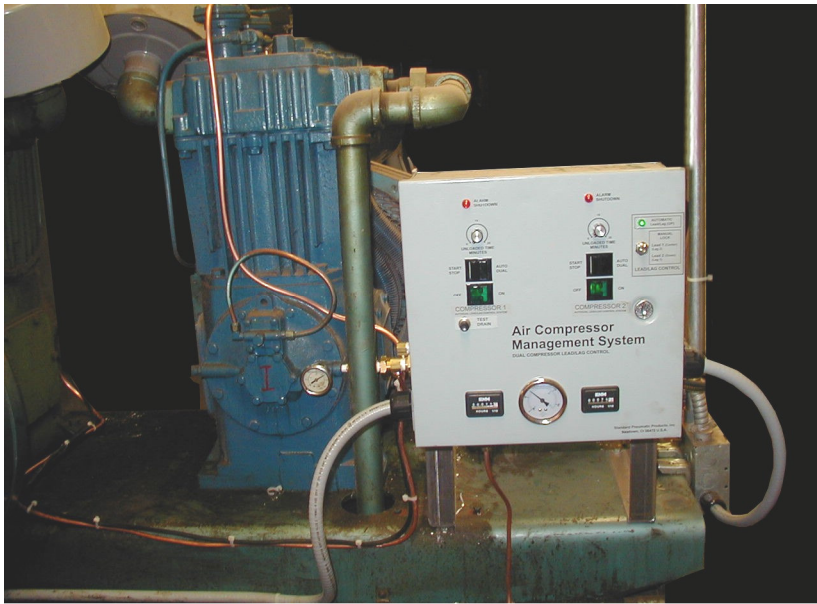


Universal Autodual ADSE for Automatic Lead/Lag Sequencing of a Quincy QR Series, Duplex 5-HP Climate Control Compressor at State University



Universal Autodual ADSE Controller installed on a duplex Quincy QR Series Climate Control Compressor at Central CT State University.

Autodual Controller Features: Automatic Dual Control, Automatic Lead/Lag Switching, Emergency Shutdown on low oil pressure fault, and Automatic Drain System.

Excessive Start/Stop cycling on both compressors caused motor and starter replacement every 2 years. Obsolete float-type tank drain was inoperative, causing receiver tank to fill with water, resulting in additional start stop cycles on compressors.

Simple 4-step connection combined the logic of the Autodual ADSE to the twin compressors converting two separate compressors into one intelligent compressor SYSTEM operating at its MAXIMUM LEVEL OF EFFICIENCY.

The Autodual ADSE logic control adds the following benefits:

- 1) **Automatic Lead/Lag Switching** -- User selectable from 10 min to 7 days. Both compressors share equal time as lead compressor.
- 2) **Automatic Dual Control** – Idle to timeout set for 5 min cools motor before stopping.
- 3) **Compressor Loaded** -- Indicator light shows when compressor is pumping.
- 4) **5 Second Initial Unload Delay** -- Offers “soft start” for beginning of pumping cycle.
- 5) **Emergency Shutdown** -- L.O. pressure switch shuts compressor down on oil pressure fault, panel indicated.
- 6) **Automatic Switching** of air compressor upon lead machine failure.
- 7) **Automatic Drain System** purges tank for 5, 10, or 20 seconds (user selectable) for every hour of ACTUAL pumping time, eliminating wasted drain air.

